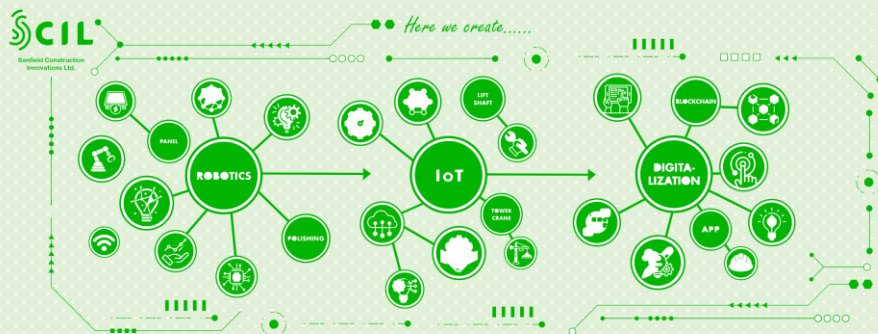


Who we are

新輝建築創科有限公司創立於2021年，致力於建築相關領域的創新科研與系統性解決方案。我們的團隊由工程師、建築師以及IT開發者組成，在自動化、機器人同建築智慧系統等領域具有行業領先的技術與經驗。

Sanfield Construction Innovations Limited was founded in 2021 to innovate and develop integrated technological solutions for the construction field and related industries. Our team is made up of Engineers, Architects, I.T. professionals and we have industry-leading experience in automation solutions, robotics, and smart systems for constructions and other areas.



Contact us

If you have any inquiries, please feel free to contact with us:



34807633



sales@scil.com.hk



香港新界沙田香港科學園16W大樓910A室
Unit 910A, Building 16W, Hong Kong Science
Park, Shatin, N.T., Hong Kong



Here we create.....

預製板安裝機器人

Precast Panel Installation Robot



Features:

- ❖ Payload: 180Kg
- ❖ Body Size: 1360x650x1300
- ❖ Auto/Manual, Collision detection etc.

Panel Features:

- Dry Density: 1,100 - 1,800 kg/m³
- Fire Resistance: 1 hour FRR
- Sound Insulation Index: 37 - 45 dB (depend on dry density)
- Thermal Transmittance: $\leq 3.5 \text{ W/(m}^2\text{K)}$
- Lightweight Anchorage - pull out: > 300 kg; pull down: > 750 kg
- Grade Strength: 5 - 45 MPa (depend on density)
- Applying CIC Green Product Certification

Note: Above data are for 75mm thick panel

[Check video here](#)



www.scil.com.hk

傳統做法



傳統施工好辛苦，招工難

傳統做法勞動强度大，需要砌磚、批盪、打磨，招工難並面臨老齡化。
The traditional way includes brick laying, plastering and polishing, which suffers labor shortage and aging problem.

作業環境差，費工費料

傳統砌磚做法用大量沙、英泥同水，亦會產生大量粉塵同噪音。
The traditional way needs lots of sand, cement and water, which creates many dusts and noisy as well.

使用Panel



使用Panel慳工料，環境好

工地唔需要砌磚與批盪，節省大量沙、英泥同水，亦唔再產生粉塵同噪音。
The site don't need brick laying and polishing, which saves lots of materials and there are no dust and noise.

人機協作讓工作輕鬆

機器人讓工作變嘅輕鬆，可以慳到50%人手，解決建築業用工及老齡化問題。
The robot makes it easy and save 50% labor, which solve the labor shortage and aging problems for construction.



以心建家 BUILDING HOMES
WITH HEART



Here we create ...

01 快Fast ↑3倍 ↓省工50%

將機器人應用到工地建設中，實現自動化預製板安裝，工作效率提升3倍並減少50%用工。

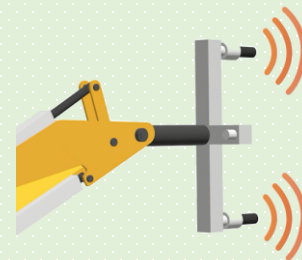
Apply robot for automatic precast panel installation to improve productivity by 3 times and save 50% labor.



02 安Safety 🛑 0.1s停機

傳感器實時掃描以檢查預製板安裝期間的潛在碰撞並可在0.1秒內停機，提升工作安全。

Real time sensor scanning detects any potential collisions and can stop moving in 0.1s, which keep the installation safe.



03 準Precise ➡➡1mm

智慧抓具配合微調功能，使預製板的安裝精度達到毫米級，確保牆面的高品質。

Smart gripper and fine tuning system make the installation accuracy to millimeters for high wall quality.

